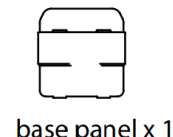
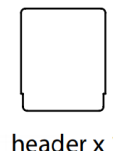
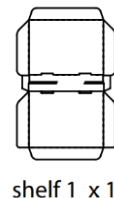
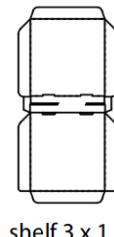
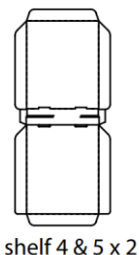
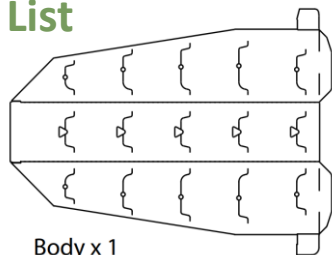


Assembly Instructions - Grass Grow Kits – FSDU

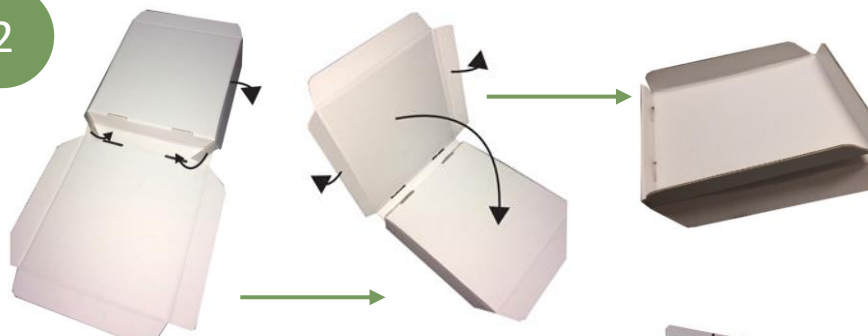
Sage Code: 33623

Dimensions: 355mm x 310mm x 1745mm (inc. Header)

Components List



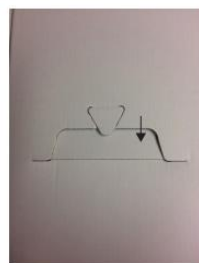
1 Assemble the body, wrap base panel around the front flaps and lock together fitting the tabs into the 2 slits in the base panel



2 Assemble the shelves as shown above.



3 Lock shelves into the side and rear slots on the FSDU body as shown. Follow the shelves order as they are not all the same size – this order number is printed on each shelf



3 Slot the header into the top of the FSDU body and fill unit with products.



Completed Unit with products